

# Controls Ready Flat Panel Installation Instructions



**IMPORTANT: READ CAREFULLY BEFORE INSTALLING FIXTURE. RETAIN THESE INSTRUCTIONS FOR FUTURE REFERENCE.**

- To reduce the risk of death, personal injury or property damage from fire, electric shock, falling parts, cuts/abrasions, and other hazards read all warnings and instructions included with and on the fixture box and all fixture labels.
- Commercial installation, service and maintenance of luminaires should be performed by a qualified licensed electrician.
- **DO NOT INSTALL DAMAGED PRODUCT!**

## **WARNING:**

### **RISK OF ELECTRICAL SHOCK**

- Turn off the electrical power at fuse or circuit breaker box before wiring fixture to power supply.
- Turn off the power when you perform any maintenance.
- Verify that supply voltage is correct by comparing it with the luminaire label information.
- Make all electrical and grounded connections in accordance with the National Electrical Code and any applicable local code requirements.
- All wiring connections should be capped with UL approved wire connectors.

## **CAUTION:**

### **RISK OF INJURY**

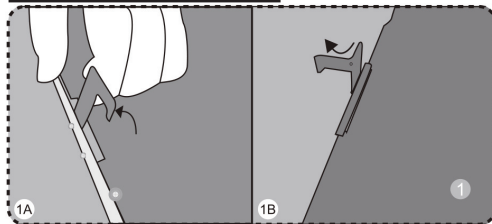
- Wear gloves and safety glasses at all times when removing luminaire from carton, installing, servicing or performing maintenance.
- Avoid direct eye exposure to the light source while it is on.
- Account for small parts and destroy packing material, as these may be hazardous to children.
- Ensure fixtures are properly secured to T-bar grid, ceiling, using wire, or aircraft cable capable of supporting 100 lbs. minimum.

## **CAUTION:**

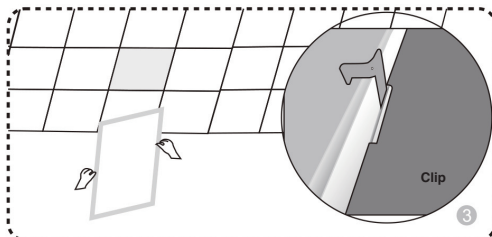
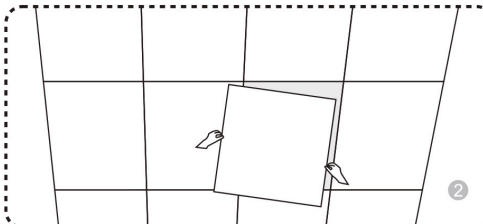
### **RISK OF FIRE**

- Keep combustible and other materials that can burn away from luminaire and lamp/lens.
- **MIN 90°C SUPPLY CONDUCTORS.**

## **Recessed Mount**



Clip is used for positioning (NOT for mounting)



- 1.) Bend mounting clip by 90°, making it vertical to the rear cover of the flat panel fixture. **(Fig. 1A)** Bend the top part of the mounting clip 90° **(Fig. 1B)** and repeat on all clips.
- 2.) Turn off power and remove the ceiling panel. **(Fig. 2)**
- 3.) Select a lumen output and color temperature by sliding switch left or right respectively to the desired value. Place the panel into T-bar. Ensure the panel is attached to the ceiling. **(Fig. 3)**

# Controls Ready Flat Panel Installation Instructions



## Surface Mount Installation

Surface mount kits sold separately:

Installation Instructions	Surface Mount Installation
<p>Note: Surface Mounting Kits are sold separately.</p> <ol style="list-style-type: none"><li>1. Surface Mounting Kit comes with four sides, screws and drywall anchors required to install directly to ceiling (Figure. 4).</li><li>2. To install to ceiling, fasten two pieces of bracket A and one piece of bracket B with four of the supplied ST3.5*9 screws (Figure. 5).</li><li>3. Drill the holes at ceiling based on the corresponding positions, then fix the frame to the ceiling with drywall anchors (Figure. 6).</li><li>4. With power turned off, wire the incoming power to the fixture driver box.</li><li>5. Once wired, slide fixture through open end and position into frame (Figure. 7).</li><li>6. Fix B bracket to the frame using supplied ST3.5*9 screws (Figure. 8)</li><li>7. Installation is complete (Figure. 9).</li></ol>	<p>Fig. 4</p> <p>x2 A x2 B</p> <p>ST4*25 screws   drywall anchors   ST3.5*9 screws</p> <p>2X4 or 1X4: 8pcs ST3.5*9 screws   6pcs ST4*25 screws   6pcs glue nails 2X2: 8pcs ST3.5*9 screws   4pcs ST4*25 screws   4pcs glue nails</p> <p>Surface Mount Kits</p> <p>Fig. 5</p> <p>Assembly</p> <p>Fig. 6</p> <p>ceiling</p> <p>Fix the frame on the ceiling</p> <p>Fig. 7</p> <p>ceiling</p> <p>Insert LED panel to the frame</p> <p>Fig. 8</p> <p>Fix "B" bracket to the frame</p> <p>Fig. 9</p> <p>Installation is complete</p>

**Warranty Information:**  
This product is warranted for 5 years from the date of purchase. If this product does not perform to the specifications supplied on this package, send an email or write to the address below for product return and replacement. This replacement is the sole remedy available. Liability for incidental or consequential damage is expressly excluded. Visit [www.halcolighting.com](http://www.halcolighting.com) for full warranty details and compatibility information.

# Controls Ready Flat Panel Installation Instructions

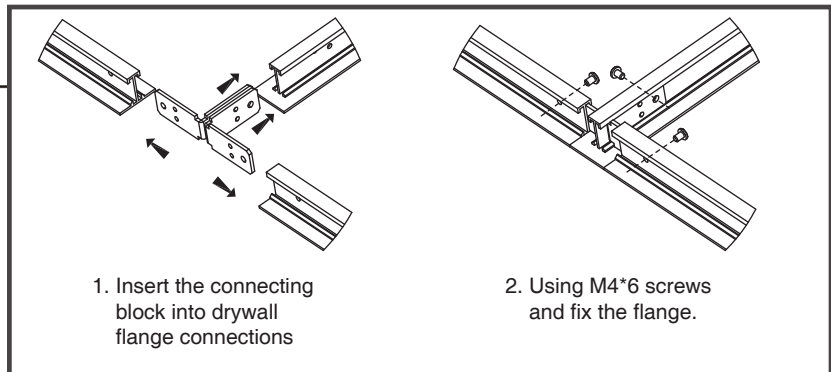
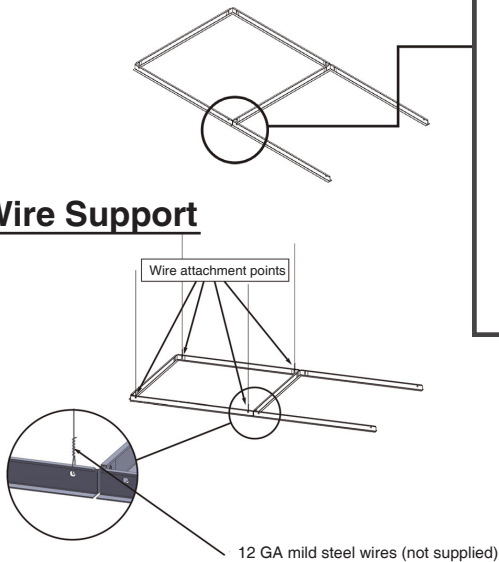


## Flange Installation

### **Flange sold separately:**

1. For installation in drywall ceilings, cut an opening of the appropriate size, and then connect the panel light to incoming power.
2. Rotate the panel light by 45 degrees.
3. Pass the panel through the ceiling surface.
4. Lay in the panel light on the ceiling or grid.

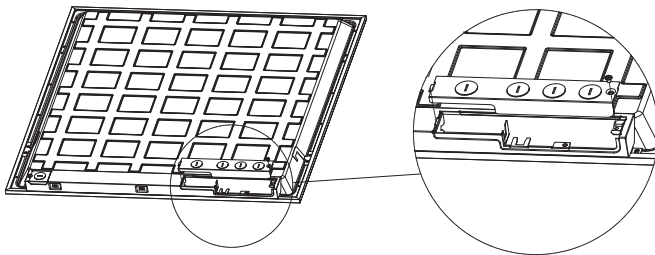
## Wire Support



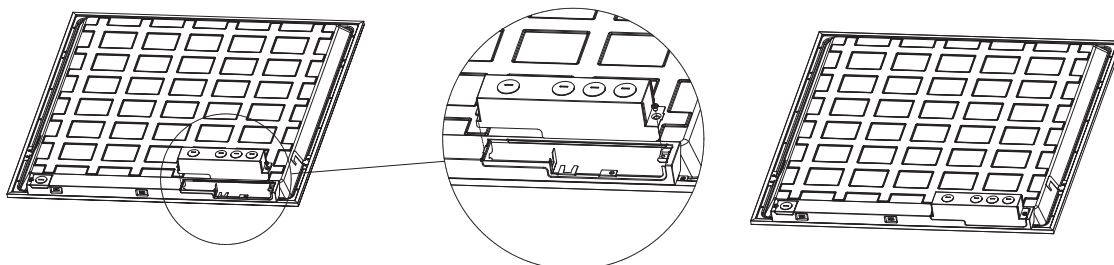
## Installing the Junction Box Accessory

**Note:** Taller junction box to be purchased separately.

1. Unscrew M4 screw and remove the standard junction box cover.



2. Fix the taller box cover properly with M4 screw.



# Controls Ready Flat Panel Installation Instructions



## Operating Characteristic

Voltage input: 120-277V 50/60Hz

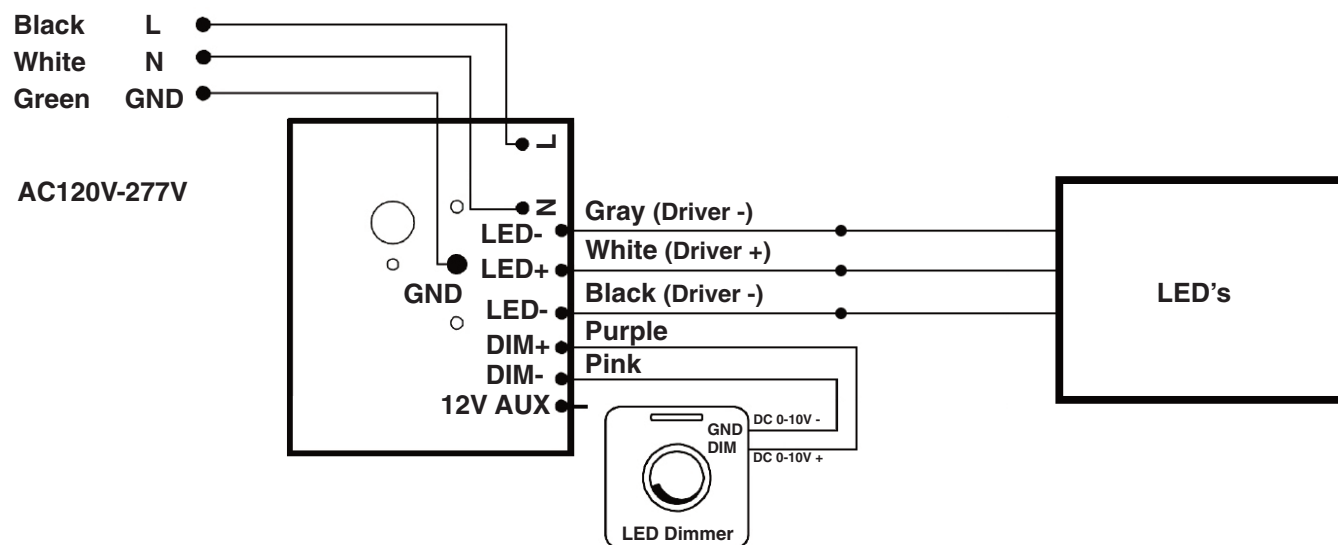
Operating temp: -4°F to 104°F

\*\*Consult with dimmer control manufacturer's wiring instructions.

### **⚠ WARNING**

**Risk of fire or electric shock, installation requires knowledge of the lighting luminaires electrical systems. If not qualified, do not attempt installation and contact a qualified electrician.**

## Standard Wiring Diagram



## Sensor Installation Instructions

Note: sensor sold separately.

1. Remove the plug from the receptacle.
2. Remove the tape from sensor and plug the sensor into receptacle, make sure the sensor is fastened.

