

Backlit Panel With Receptacle Installation Instructions



IMPORTANT: READ CAREFULLY BEFORE INSTALLING FIXTURE. RETAIN THESE INSTRUCTIONS FOR FUTURE REFERENCE.

- To reduce the risk of death, personal injury or property damage from fire, electric shock, falling parts, cuts/abrasions, and other hazards read all warnings and instructions included with and on the fixture box and all fixture labels.
- Commercial installation, service and maintenance of luminaires should be performed by a qualified licensed electrician.
- **DO NOT INSTALL DAMAGED PRODUCT!**

WARNING:

RISK OF ELECTRICAL SHOCK

- Turn off the electrical power at fuse or circuit breaker box before wiring fixture to power supply.
- Turn off the power when you perform any maintenance.
- Verify that supply voltage is correct by comparing it with the luminaire label information.
- Make all electrical and grounded connections in accordance with the National Electrical Code and any applicable local code requirements.
- All wiring connections should be capped with UL approved wire connectors.

CAUTION:

RISK OF INJURY

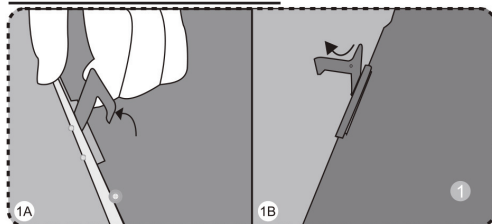
- Wear gloves and safety glasses at all times when removing luminaire from carton, installing, servicing or performing maintenance.
- Avoid direct eye exposure to the light source while it is on.
- Account for small parts and destroy packing material, as these may be hazardous to children.
- Ensure fixtures are properly secured to T-bar grid, ceiling, using wire, or aircraft cable capable of supporting 100 lbs. minimum.

CAUTION:

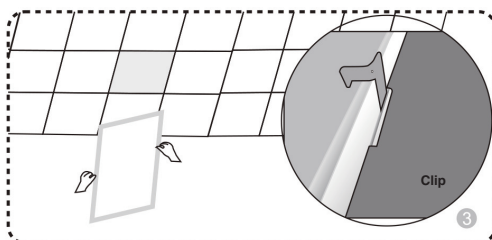
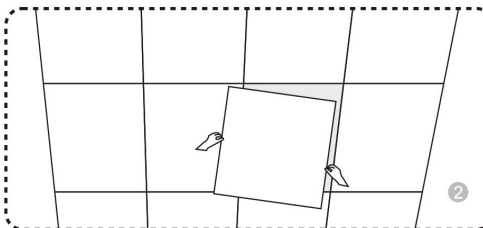
RISK OF FIRE

- Keep combustible and other materials that can burn away from luminaire and lamp/lens.
- **MIN 90°C SUPPLY CONDUCTORS.**

Recessed Mount



Clip is used for positioning (NOT for mounting)



- 1.) Bend hang buckle by 90°, making it vertical to the rear cover of the flat panel fixture. **(Fig. 1A)** Bend the top part of the hang buckle 90° **(Fig. 1B)** and repeat on all hang buckle's.
- 2.) Turn off power and remove the ceiling panel. **(Fig. 2)**
- 3.) Select a wattage and color temperature by sliding switch left or right respectively to the desired value. Place the troffer into T-bar. Ensure the troffer is attached to the ceiling. **(Fig. 3)**

Backlit Panel With Receptacle Installation Instructions



Surface Mount Installation

Surface mount kits sold separately:

Installation Instructions	Surface Mount Installation
<p>Note: Surface Mounting Kits are sold separately.</p> <ol style="list-style-type: none">1. Surface Mounting Kit comes with 4 sides and screws and glue nails required to install directly to ceiling (Figure. 4).2. To install to ceiling, fasten 2pcs bracket A and 1pc bracket B with 4pcs ST3.5*9 screws (Figure. 5).3. Drill the holes at ceiling based on the corresponding positions, then fix the frame to the ceiling with glue nails (Figure. 6).4. With power turned off, wire to the fixture driver box.5. Once wired, push fixture through open end and position into frame (Figure. 7).6. Fix B bracket to the frame (Figure. 8).7. Installation is complete (Figure. 9).	<p>Fig. 4</p> <p>2X A 2X B</p> <p>ST4*25 screws glue nails ST3.5*9 screws</p> <p>2X4 or 1X4: 8pcs ST3.5*9 screws 6pcs ST4*25 screws 6pcs glue nails 2X2: 8pcs ST3.5*9 screws 4pcs ST4*25 screws 4pcs glue nails</p> <p>Surface Mount Kits</p> <p>Fig. 5</p> <p>Assembly</p> <p>Fig. 6</p> <p>ceiling</p> <p>Fix the frame on the ceiling</p> <p>Fig. 7</p> <p>ceiling</p> <p>Insert LED panel to the frame</p> <p>Fig. 8</p> <p>Fix "B" bracket to the frame</p> <p>Fig. 9</p> <p>Installation is complete</p>

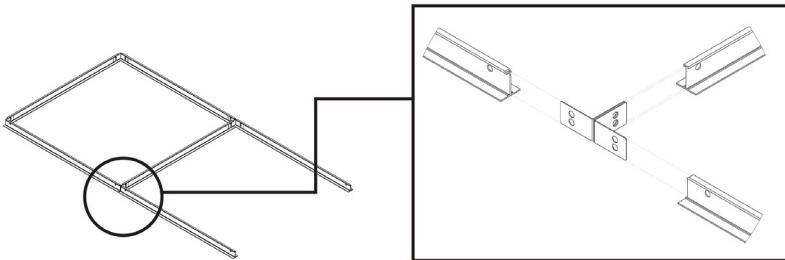
Warranty Information:
This product is warranted for 5 years from the date of purchase. If this product does not perform to the specifications supplied on this package, send an email or write to the address below for product return and replacement. This replacement is the sole remedy available. Liability for incidental or consequential damage is expressly excluded. Visit www.halcolighting.com for full warranty details and compatibility information.

Backlit Panel With Receptacle Installation Instructions

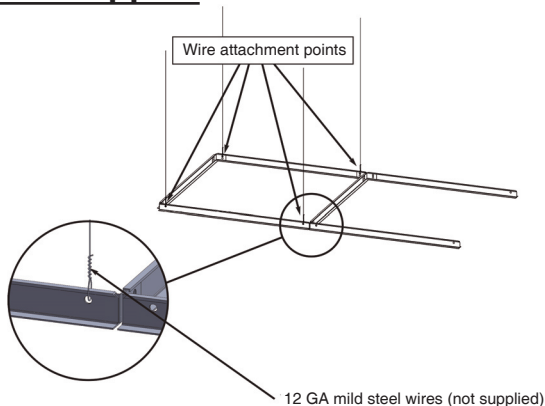


Installation Instructions

1. For installation in plaster ceilings, cut an opening of the appropriate size, and then connect the panel light to an incoming power line.
2. Rotate the panel light by 45 degrees.
3. Pass the panel through the ceiling surface.
4. Lay in the panel light on the ceiling or grid.



Wire Support



Installation Instructions

- 1.) Using a screwdriver open the cover of junction box.
- 2.) Connect dimming line in purple color with line marked Dim+ in the driver and DIM- in gray or pink with DIM- from the driver.
- 3.) Remove knock-out(s) and connect conduit to the junction box using the proper connector(s).
- 4.) Close the junction box cover and fasten using a screwdriver.

Operating Characteristic

Voltage input: 120-277V 50/60Hz

Operating temp: -4°F to 104°F

**Consult with dimmer control manufacturer's wiring instructions.

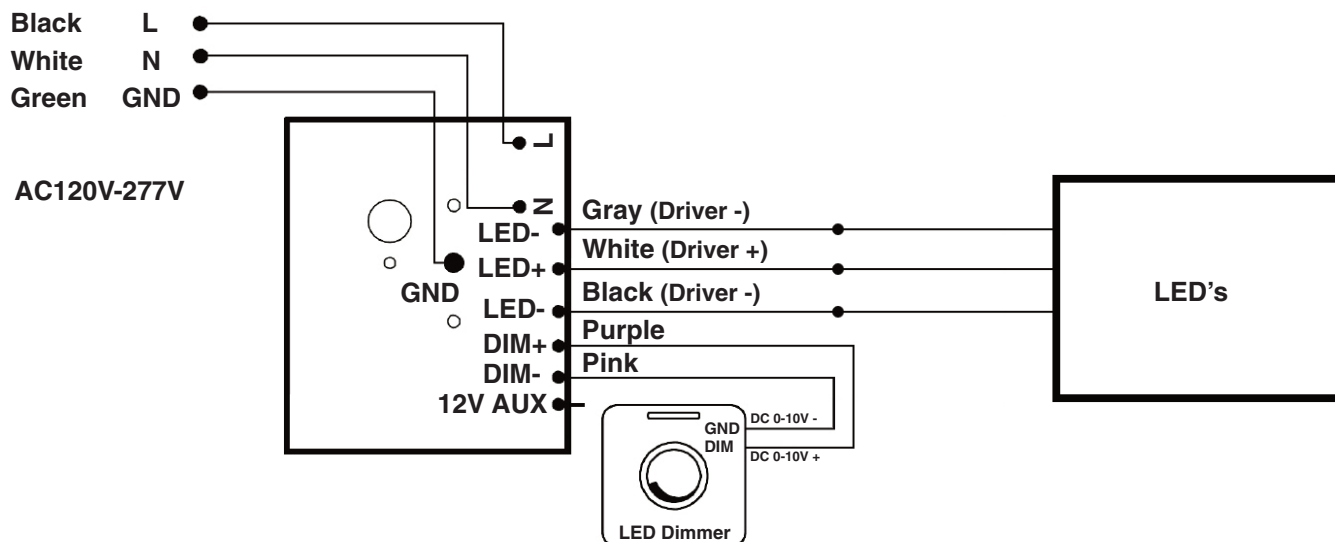
Backlit Panel With Receptacle Installation Instructions



⚠ WARNING

Risk of fire or electric shock, installation requires knowledge of the lighting luminaires electrical systems. If not qualified, do not attempt installation and contact a qualified electrician.

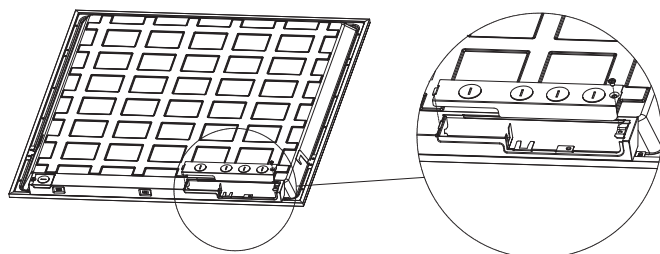
Standard Wiring Diagram



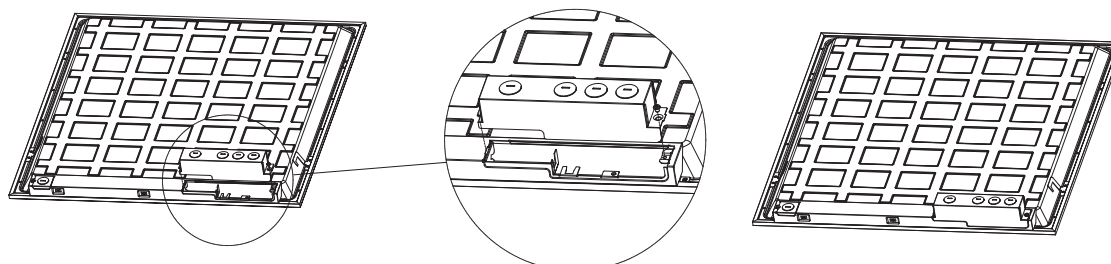
Using the Taller Junction Box

Note: Taller junction box to be purchased separately.

1. Unscrew M4 screw and remove the standard junction box cover.



2. Fix the taller box cover properly with M4 screw.



Backlit Panel With Receptacle Installation Instructions



Sensor Installation Instructions

Note: sensor sold separately.

1. Remove the silicone plugs from the receptacle.
2. Remove the tape from sensor and plug the sensor into receptacle, make sure the sensor is fastened.

