

Highbay Retrofit Selectable Lamp Installation Instruction



Do not use any electric generator to test this LED lamp.
Please avoid using the led fixture in environment where there is smoke, sulfur, and corrosive substances. But if used in such environment, make sure the led fixture is well protected by an enclosed lampshade with dimension no less than below size, and materials made up of glass, semi-glass, or semi-metallic. There should be no covering on the surface of the lampshade to block heat dissipation.

Power(W)	70/80/90	100/120/140
Volume(CM)	36*36*35	40*40*35

PARTS/COMPONENTS, INCLUDED IN KIT

- Installation Instruction
- Security Rope
- LED Lamp



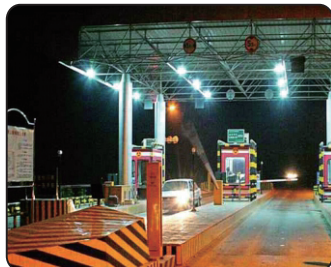
Highbay Retrofit Selectable Lamp Installation Instruction

Product features:

- ◆ 100 degree lighting, UGR<30.
- ◆ CCT selectable and wattage selectable.
- ◆ Motion microwave sensor or motion PIR sensor optional, 0-10V continuous dimming.
- ◆ Two dimming modes optional: segmented dimming, sensor dimming.
- ◆ Pure aluminum fins heatsink, no fans.
- ◆ Internal driver, input voltage AC120-277V.
- ◆ Sealant pouring for whole driver.
- ◆ Long lifespan and good heat dissipation.
- ◆ Direct replacement for Metal Halide lamp, easy installation.
- ◆ Fits many different fixtures to replace traditional lamps.
- ◆ Operating ambient temperature can up to 50°C.

Application:

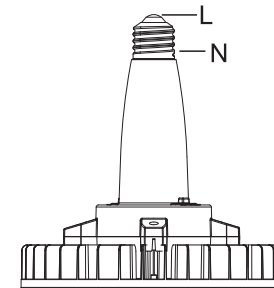
Widely used in supermarket, warehouse, garage, home, office, hotel, hospital, school, street, garden etc.



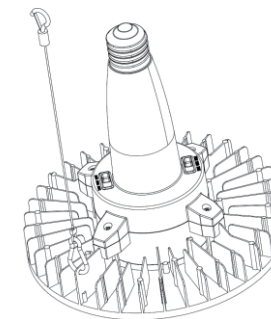
Installation Instructions:

Warning: Please make sure the power is off before installation.

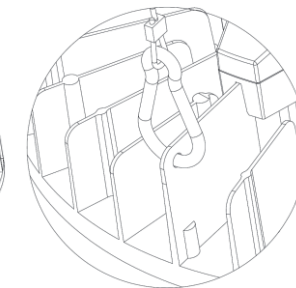
1. Turn off the power switch.
2. Screw off the CFL or MHL or HPS and so on, see Figure (3)(4).
3. Take out the led corn light and screw on, see Figure (1).
 If you want to install a sensor, please see page 4 for detailed installation instruction.
 (Note: Pls make sure to take off the ballast before installing this led lamp, see Figure (4). Otherwise, the ballast will produce high-voltage resonance and breakdown the led lamp.)
4. If security rope is provided, please fix the rope on the lamp by hand, then fix the other end of the rope on the shell, see Figure (2).
5. Lamp CCT and dimming can be adjusted, see Figure (5).
6. Turn on the power switch. (Installation is Finished.)



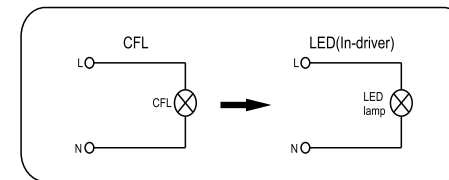
Figure(1)



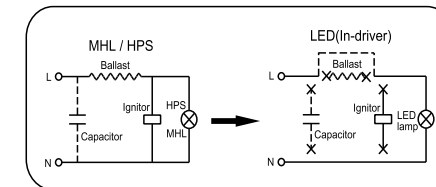
Figure(2)



Security Rope

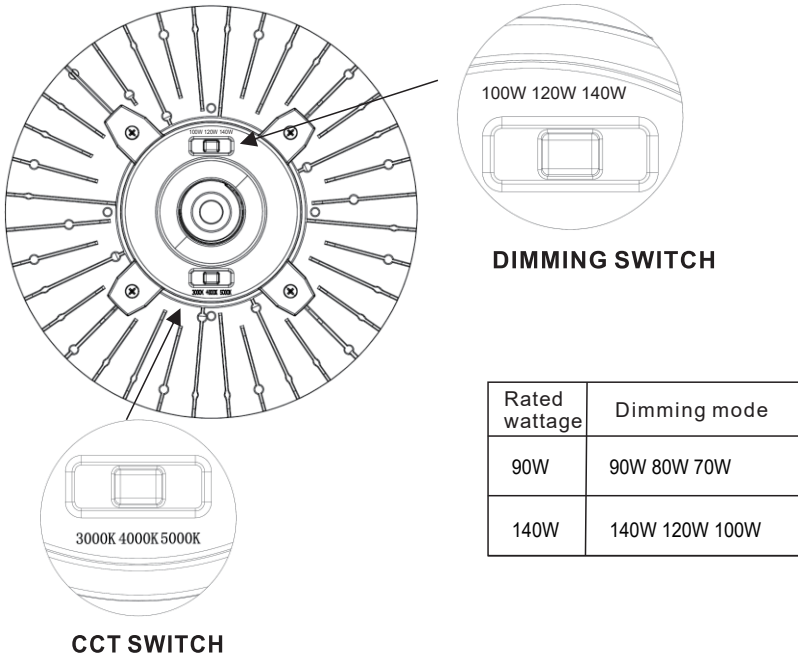


Figure(3)



Figure(4)

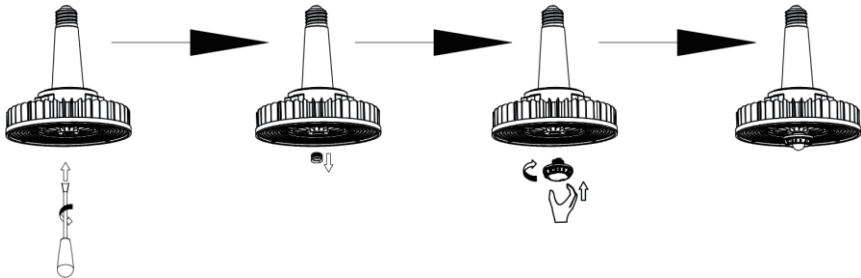
CCT adjustable and dimming mode diagram (For reference when adjust one or both modes)



Figure(5)

Installation of motion mircowave sensor or motion PIR sensor

Easy to install by using a straight screwdriver.
 1.Use a flat-blade screwdriver to unscrew and remove the plug.
 2.Twist on the motion microwave sensor or motion PIR sensor tightly according to demand.
 Please note: There is no DIP switch on the motion microwave sensor, please refer to the remote control instruction to adjust the motion microwave sensor according to demand.



motion mircowave sensor or motion PIR sensor

WARNING:

THIS DEVICE IS NOT INTENDED FOR USE WITH EMERGENCY EXITS
 ADDED WEIGHT OF THE DEVICE MAY CAUSE INSTABILITY OF A
 FREE-STANDING PORTABLE LUMINAIRE
 USE ONLY WITH A PORTABLE TABLE LUMINAIRE THAT IS
 PROVIDED WITH A SHADE

Avertissement:

NE CONVIENT PAS AUX SORTIES DE SECOURS
 LE DISPOSITIF CONSTITUE UN POIDS SUPPLÉMENTAIRE CE QUI
 PEUT CAUSER
 L'INSTABILITÉ D'UN LUMINAIRE PORTATIF AUTONOME
 UTILISER UNIQUEMENT AVEC UNE LAMPE DE TABLE DOTÉE D'UN
 ABAT-JOUR
 USAR EN LÁMPARAS DE MESA PORTÁTILES EN
 DONDE LA DISTANCIA DESDE LA PARTE INFERIOR DE
 LA BASE A LA PARTE SUPERIOR DEL
 PORTALÁMPARAS NO DEBE EXCEDER TRES VECES
 EL DIÁMETRO MÍNIMO DE LA BASE