

INSTALLATION INSTRUCTIONS FOR LED EMERGENCY LIGHT



IMPORTANT SAFEGUARDS

READ AND FOLLOW ALL SAFETY INSTRUCTIONS

When using electrical, basic safety precautions should always be followed including the following.

1. Disconnect power at fuse or circuit breaker before installing or servicing.
2. Do not use outdoors.
3. Do not mount in hazardous locations, or near gas or electric heaters.
4. Do not let power cords touch hot surface.
5. Equipment should be mounted in locations and at heights where it will not be subjected to tampering by unauthorized personnel.
6. The use of accessory equipment not recommend by the manufacturer may cause an unsafe condition.
7. Do not use this equipment for other than intended use.
8. All servicing should be performed by a qualified personnel only.
9. Allow battery to charge for 24 hours before first use.

SAVE THESE INSTRUCTIONS

MAINTENANCE

None required. Replace the batteries as needed according to ambient conditions. However, we recommend that the equipment be tested regularly in accordance with local codes.

OPERATION

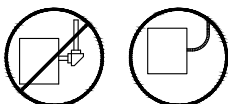
Press the test button. The LED heads will turn on and the LED indicator will turn off. Release the test switch, LED indicator will turn on and the LED heads will turn off.

TROUBLE SHOOTING GUIDE

If LED heads or LED indicator does not illuminate, check the following:

1. Check AC supply - verify that unit has 24 hours AC supply.
2. Unit is shorted or battery is not connected.
3. Battery discharge. Permit unit to charge for 24 hours and then re-test.
4. Battery have to recharge if product keep in stock over 12 months, detail manual refer "BATTERY STOCK AND RECHARGE GUIDELINE".
5. If above trouble shooting hints do not solve you problem, contact factory for assistance.

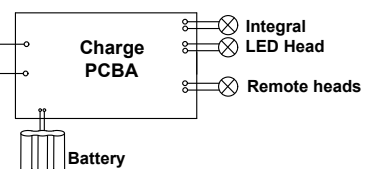
Use Flexible Conduit Only



Wiring Diagram

AC INPUT

White NEUTRAL
Black 120-277VAC



Mounting Instructions

Maximum mounting height

Fixture should not be mounted exceed following height.

EMG-HPEM-WH-RC: 40ft

Wall Mount-Back Power Feed (see Fig 2)

1. Use flat blade screwdriver insert the two slots and pry off front cover from back plate (see Fig 1).
2. Knockout cable hole and appropriate mounting hole in back plate.
3. Feed utility AC wires through the cable hole of back plate.
4. Secure back plate to J-box by screws.
5. Connect the fixture wires to the utility AC wires using the wire nuts provided. Connect the white wire to neutral, connect the black wire to the hot lead. Press the wires into the J-box (Refer to Wiring diagram).
6. Connect remote heads. Refer to below instruction for remote heads.
7. Connect battery connector.(see Fig 2).
8. Snap the front cover on the back plate.
9. Restore power and press test button. LED heads will turn on.
10. Adjust the lamp head and lens direction as per needs.

Open fixture

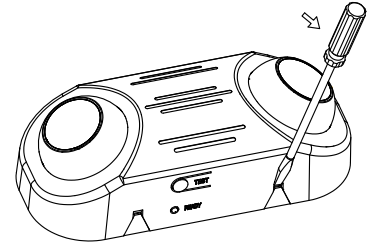


Fig 1

Wall mount-Back Power Feed

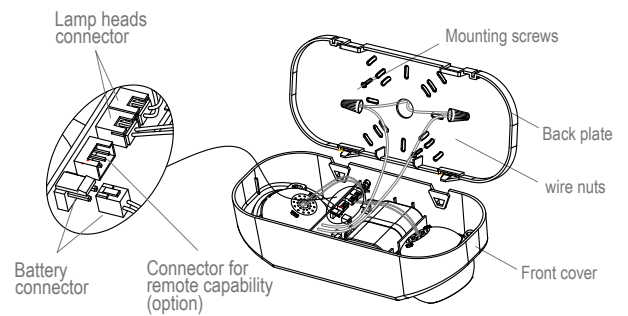


Fig 2

Ceiling Mount -Top Power Feed (see Fig 3)

Refer to above **Wall mount-Back Power Feed** instruction.

Just one difference :

Mount back plate on the ceiling surface instead of wall surface.

Connecting Remote heads (see Fig 2)

Optional function, only RC item with remote capability.

maximum remote capability 6V4.5W

Attach remote wire on remote connector on PCBA,

Connect remote heads extended wire to remote wire, yellow is positive(+), purple is negative(-). connect wires using wire nuts.

Ceiling mount-Top Power Feed

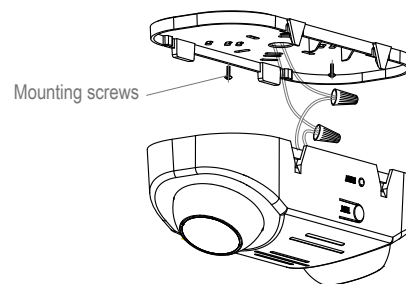


Fig 3

INSTALLATION INSTRUCTION

SELF-DIAGNOSTICS / SELF-TEST OPTION

SAVE THESE INSTRUCTIONS

1. When AC power is supplied to fixture, the unit will automatically initiate a self-test and self-diagnostics test as follows:
- (1) Verifies battery disconnection, charger board failure at every 5 seconds.
 - (2) 1 minute self-testing every month.
 - (3) 90 minutes self-testing on every 12 months after installation.

2. Dual color LED lamp indicator shows the following status:

- (1) Green color On / Ready
 blinking: Testing
- (2) Red color (Service Alert)
- (3) Service Alert LED Code (Red color LED lamp indicator)

●	One blink, 4 second pause	Battery is not connected
● ●	Two blinks, 4 second pause	Battery voltage too low
● ● ●	Three blinks, 4 second pause	Charger board circuit failure
● ● ● ●	Four blinks, 4 second pause	Transfer function failure
● ● ● ● ●	Five blinks, 4 second pause	Integral lamp failure (Option)
● ● ● ● ● ●	Six blinks, 4 second pause	Remote heads failure (Option)
● ● ● ● ● ● ●	Seven blinks, 4 second pause	LED strip failure(just for exit sign) (Option)

NOTICE

After solving the fault of emergency equipment, please press test button for 2 seconds then release to reset. LED indicator will show green

3. Self-testing / self-diagnostic also have manual test function, press test button as follows:

Press test button once	30 seconds discharge test
Press test button twice within 2 seconds	3 minutes discharge test
Press test button 3 times within 2 seconds	30 minutes discharge test
Press test button 4 times within 2 seconds	90 minutes discharge test

REMOTE HEADS CONNECTION INSTRUCTION SEE NEXT PAGE (Option)

4. Connect remote heads(Optional)

(1) Remove jump connector from the female connector on PCBA.

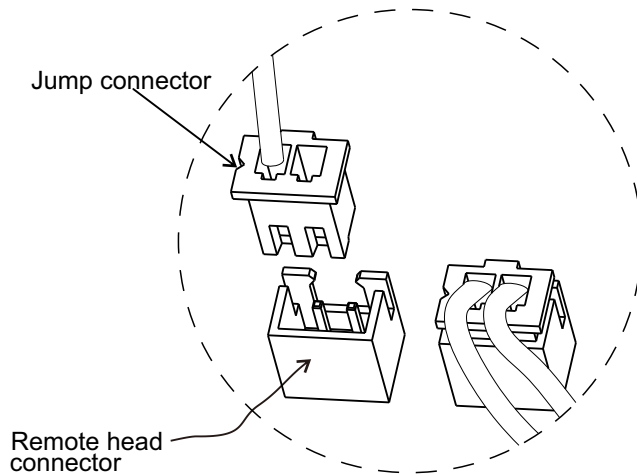


Figure 1

(2) Attach the remote male connector into the female connector on PC board.

(3) Connect extended remote head wires to the remote wires using wire nut. Yellow is positive(+) and the purple is negative(-).

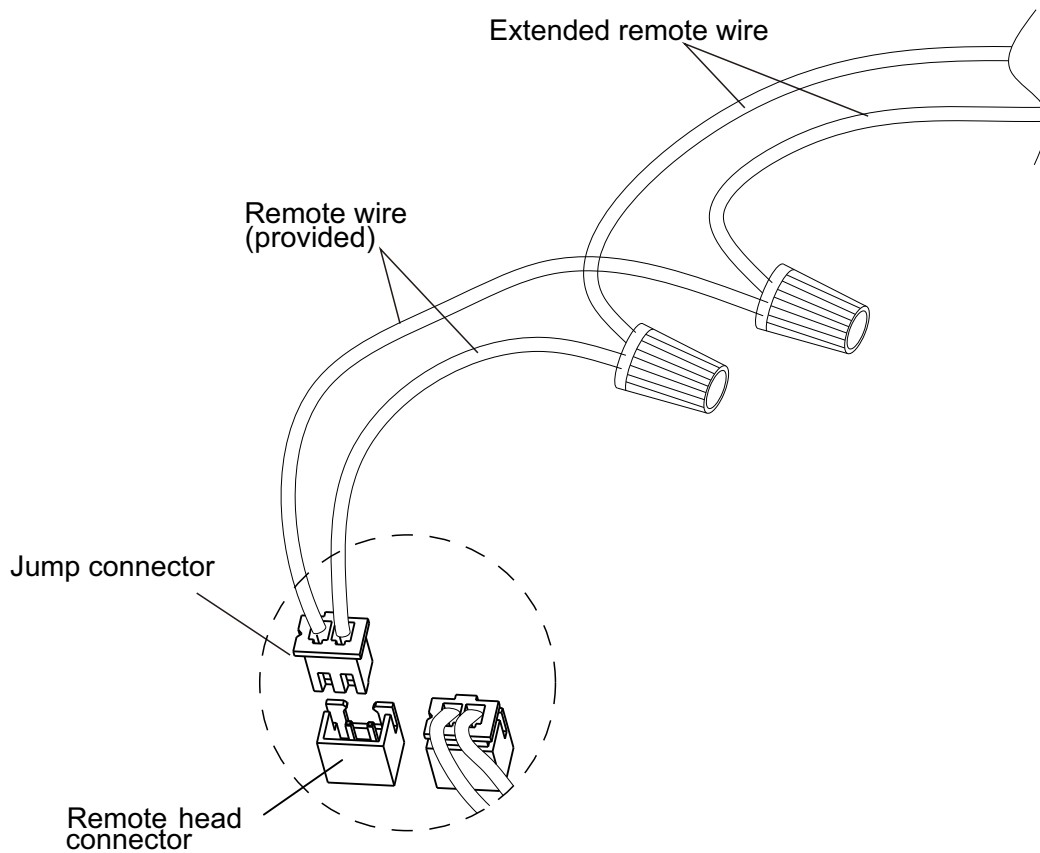


Figure 2