



Product Launch – Essential Series Round High Bay

Where there's *light* there's *Halco*

Essential Round High Bay



Essential Round High Bay

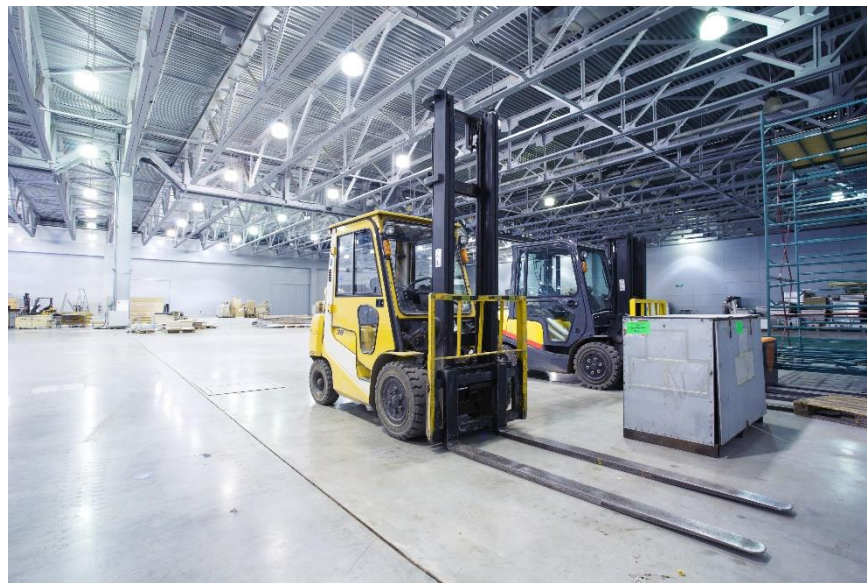
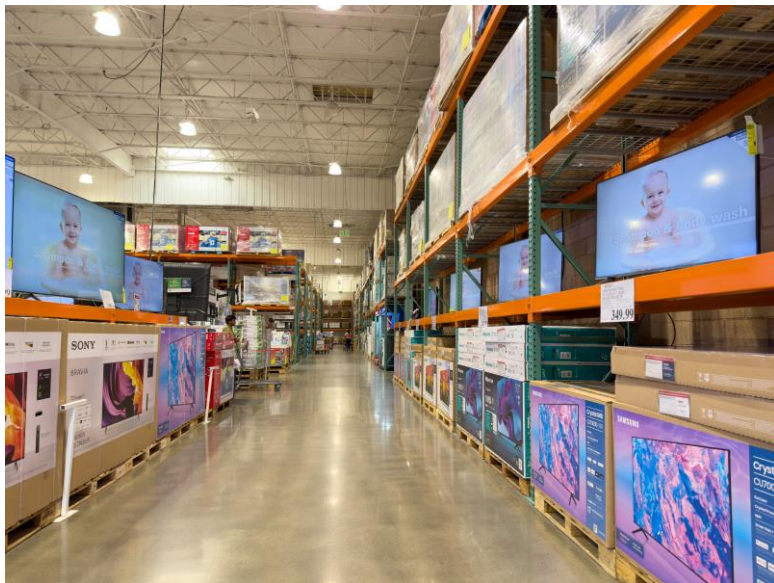
Essential Round High Bay



Halco
LIGHTING TECHNOLOGIES

Application:

Warehouses, Gymnasiums, Big Box Stores, and Showrooms



Essential Round High Bay

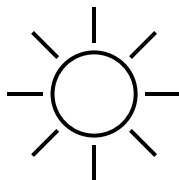


Halco
LIGHTING TECHNOLOGIES

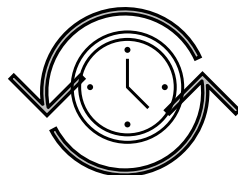
Key Specs:



Selectable
Output



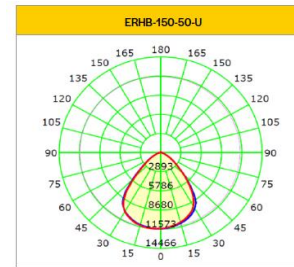
5,000K



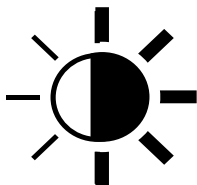
50K hour LED
Lifetime



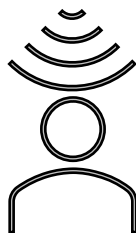
5-Year
Warranty



120-277V



0-10 V



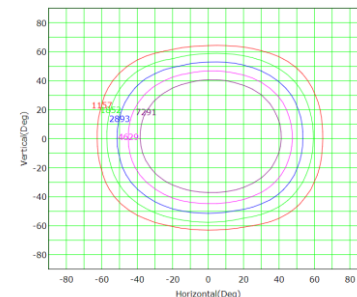
Occupancy
Sensing



Daylight
Sensor



IP65



ProLED.



Essential Round High Bay

Stock Products

Compact Size

ERHB-100-50-U

- 10 13/16" x 4 5/8"

ERHB-150-50-U

- 10 13/16th" x 4 5/8"

ERHB-200-50-U

- 12 5/8" x 5"

ERHB-240-50-U

- 12 5/8" x 5"



Halco
LIGHTING TECHNOLOGIES



Product SKU	Product Code	Product Description	Aprox Pallet Qty
37300	ERHB-100-50-U	ProLED Essential Round High bay 100W, 5000K, Universal Voltage 120-277VAC, 0-10V Dimming, Black	180
37301	ERHB-150-50-U	ProLED Essential Round High bay 150W, 5000K, Universal Voltage 120-277VAC, 0-10V Dimming, Black	200
37302	ERHB-200-50-U	ProLED Essential Round High bay 200W, 5000K, Universal Voltage 120-277VAC, 0-10V Dimming, Black	160
37303	ERHB-240-50-U	ProLED Essential Round High bay 240W, 5000K, Universal Voltage 120-277VAC, 0-10V Dimming, Black Static SKUs	96

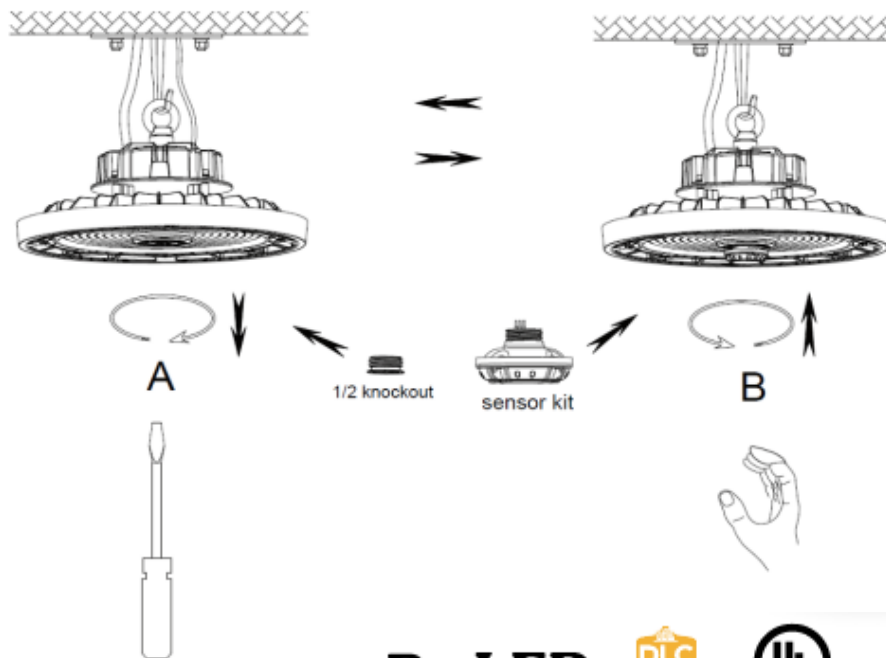
Essential Round High Bay

Quick Install Controls - Sold Separately



Halco
LIGHTING TECHNOLOGIES

DC Occupancy Sensor		
Product SKU	Product Code	Description
24875	DCMS	DC Bi-Level Motion Sensor
		
DC Occupancy Sensor		
Product SKU	Product Code	Description
24876	DCMS-REM	DC Bi-Level Motion Sensor Remote
		



ProLED.



Essential Round High Bay



Halco
LIGHTING TECHNOLOGIES

Accessories- Sold Separately



Accessories		
Product SKU	Product Code	Product Description
24875	DCMS	DC Bi-Level Motion Sensor
24876	DCMS-REM	DC Motion Bi-Level Motion Sensor Remote
37304	ERHB-PC	Essential Round Highbay Polycarbonate Reflector
37305	ERHB-AL	Essential Round Highbay Aluminum Reflector
37306	ERHB-WG	Essential Round Highbay Wire Guard
37307	ERHB-YB	Essential Round Highbay Yoke Mount Bracket
37308	ERHB-PA	Essential Round Highbay Pendant Mount Adapter
30273	HRHB-BBU-30	HoverBay Round Highbay EM Pack 30 Watt



ProLED.



Essential Round High Bay



Halco
LIGHTING TECHNOLOGIES

Take Aways:

Applications

- Warehouses
- Gymnasiums
- Big box and retail stores
- Showrooms

Performance

- 100, 150, 200, and 240 wattage options
- Lumen efficacy of 138-140 LPW
- L70 lumen maintenance of 50,000 hours
- Built in 6kv surge protection
- 5 year limited warranty

Certifications: UL, cUL, FCC, RoHS, IP65 wet location rated, DLC 5.1 premium

Controls: 0-10 V dimming standard, Bi-level motion sensor (accessory)



Essential Round High Bay



Halco
LIGHTING TECHNOLOGIES

Marketing Materials

- Specification Sheet
- Product Presentation
- IES Files
- Installation Instructions
- Interactive Landing Page
- E-Blast to Agents, and Distributions Partners
- Sample Bags (limited quantity)
 - Includes Sell Sheet and Battle Card

ProLED
LED Essential Round High Bay Light
Installation Instructions

Halco
LIGHTING TECHNOLOGIES

LED Essential Round High Bay Light Installation Instruction

Caution:
1. Do not use the electric power to test the LED light.
2. Please do not touch the power supply and wiring when installing the fixture.
3. Please do not touch the power supply and wiring when installing the fixture.
4. Please do not touch the power supply and wiring when installing the fixture.

Notice:
1. The LED light is not a standard light. The installer personnel must have professional skills to install it.
2. Please wear gloves to avoid injury before installation.
3. If there is any smoke or odor, please turn off the power immediately and contact the manufacturer.

Attention:
1. Please do not touch the power supply and wiring when installing the fixture.
2. Please do not touch the power supply and wiring when installing the fixture.

Warning Diagram & Instruction:
This LED light can be installed with different DC voltage and is suitable with different wiring. Please refer to the wiring diagram for installation.



Installation Methods: Hook Mount, Ceiling Mount, 1/2" NPT Mount (Please choose the most suitable installation method for the product you are using)

Hook Mount:
1. Screw the hook into the ceiling, light fixture and fix it. (Figure 1)
2. Hang the light on the hook. (Figure 2)
3. After installation, connect the wire of the fixture to the main power supply and secure it with the screw. (Figure 3)

Ceiling Mount:
1. Screw the hook into the ceiling, light fixture and fix it. (Figure 1)
2. Hang the light on the hook. (Figure 2)
3. After installation, connect the wire of the fixture to the main power supply and secure it with the screw. (Figure 3)

1/2" NPT Mount:
1. Screw the hook into the ceiling, light fixture and fix it. (Figure 1)
2. Hang the light on the hook. (Figure 2)
3. After installation, connect the wire of the fixture to the main power supply and secure it with the screw. (Figure 3)

Figure 1
Figure 2
Figure 3



Halco
LIGHTING TECHNOLOGIES

LED Luminaires

Essential Round Highbay

- Lumen Packages Covering 14,000 to 33,000 Lumens
- Multiple Mounting Options
- Easy Plug and Play DC Bi-Level Motion Sensor
- DLC 5.1 Premium
- "Driver on Top" Design for Greater Heat Dissipation versus Driver on Board (DOB) Products

Specifications

Description
The Essential Round Highbay offers the perfect balance of affordability and performance for a wide array of applications including warehouses, gymnasiums, big box stores, and showrooms. In addition to its excellent lumen efficacy and longevity its powder coated die-cast aluminum housing and polycarbonate lens, along with its IP65 Wet Location rating delivers a robust and high performing luminaire. Finally, the Essential Round Highbay offers excellent versatility and ease of installation through its included 6" cord and 1/2" NPT steel hook and optional yoke and pendant mounts.

Performance

- 100, 150, 200, and 240 wattage options
- Lumen efficacy of 135-140
- L70 lumen maintenance of 50,000 hours
- Built in 6kv surge protection
- 5 year limited warranty
- 120-277VAC input
- Standard 6" 18/3 shielded power cord

Construction

- DOT (Driver on Top) die-cast aluminum housing with powder coated black finish
- 90 degree polycarbonate (PC) lens
- 1/2" NPT steel hook (standard)
- Yoke mount bracket (accessory)
- Integrated 6kv surge protection

Controls

- 0-10V dimming standard
- Bi-level motion sensor (accessory)

Certifications

- UL
- cUL
- FCC
- RoHS
- IP65 wet location rated
- DLC S-1 premium

Applications

- Warehouses
- Gymnasiums
- Big box and retail stores
- Manufacturing
- Showrooms

IES Files

ESSR-150-00-U
ESSR-200-00-U
ESSR-240-00-U

Round High Bay LED Portfolio



Halco
LIGHTING TECHNOLOGIES

	Essential Round High Bay	ProLED Select HoverBay Round High Bay Series
Applications	Warehouses, Gymnasiums, Big box and retail stores, Manufacturing, Showrooms	Warehouses, Gymnasiums, Big box and retail stores, Manufacturing, Showrooms
Lumens	14,000 LM; 21,000 LM; 28,000 LM; and 33,000 LM	14,000LM; 20,000LM; 28,000LM; and 33,000LM
Optical Distribution	90°	90°
Weight	3.7; 5.3 lbs	5.9; 6.1; 8.5; 9.9 lbs
Housing/Construction	Die-cast aluminum	Die-cast aluminum
Driver Construction	Driver on Top	Remote Mounted Driver
Wet-Location	UL Wet location	UL Wet location
IP Ratings	IP65	IP66
Certifications/Ratings	DLC 5.1 Premium, cULus, FCC	DLC 5.1 Premium, cULus, FCC
Ambient Temperature Range	-30°C to 50°C	-40°C to 55°C
CCT	5000K	4000K, 5000K
CRI	>80	>70
Emergency Backup	Optional Accessory	Optional Accessory
Controls	Optional Occupancy Sensor	Optional Occupancy Sensor

Thank you

Halco[®]
LIGHTING TECHNOLOGIES

